

# INSTRUCTIONS



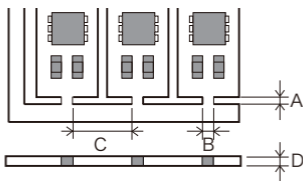
Manual Depaneling Tool

## YN-215AS/220AS

### Features

- This tool is for depaneling PCBs with slits, or perforations.
- Only light force required. Less flex and less stress.
- Applicable for **FR-1/CEM-3** PCBs.

### Specifications

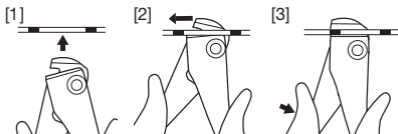


	YN-215AS	YN-220AS
A	1.6mm or more	2.1mm or more
B	2.5mm or less	
C	25mm or more	
D	1.6mm or less	2.0mm or less

Model	Size	Weight	Blade Thickness
YN-215AS	147mm	95g	1.5mm
YN-220AS			2.0mm

### How to Use

- [1] Insert the tool into the slot.
- [2] Run the blade along the slot in the direction shown by arrow, until reaching the first isthmus that needs to be removed.
- [3] While holding the board against the two counter blades, press the handles of the tool together, as shown in the diagram.



TAIYO ELECTRIC IND.CO.,LTD.

[www.goot.co.jp](http://www.goot.co.jp) E-mail: [info@goot.co.jp](mailto:info@goot.co.jp)